

WEEK AT A GLANCE

Follow us
@gilmoregriffins

ÉCOLE ÉLÉMENTAIRE GILMORE ELEMENTARY



4 - 8 avril | April 4 - 8

Monday, Apr 4

Frozen Yogurt Day

**Last Day to order
Coffee & Donuts**

*info below

**Grad Committee Mtg
@ 7pm**

*link and info below

Tuesday, Apr 5

Colourful Day



Wednesday, Apr 6

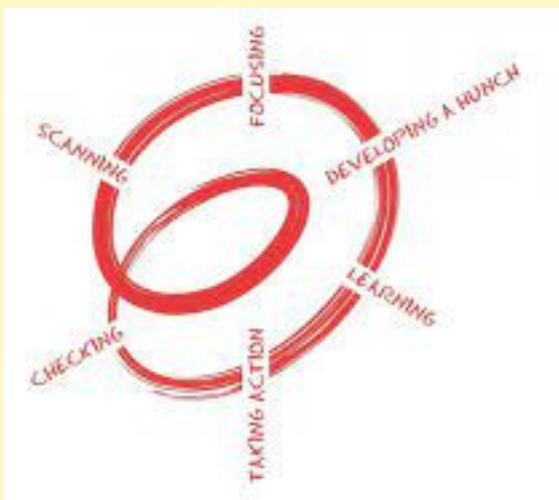
Thursday, Apr 7

Friday, Apr 8

Jersey Day



Our School Story



We revisited our scanning data through collaborative dialogue. Check our [new action post](#) to see what one small action we can take and how we will know it's making a difference in student learning.

Next steps: Make purposeful observations to gather evidence on how our "one small action" is helping students communicate their thinking and connections

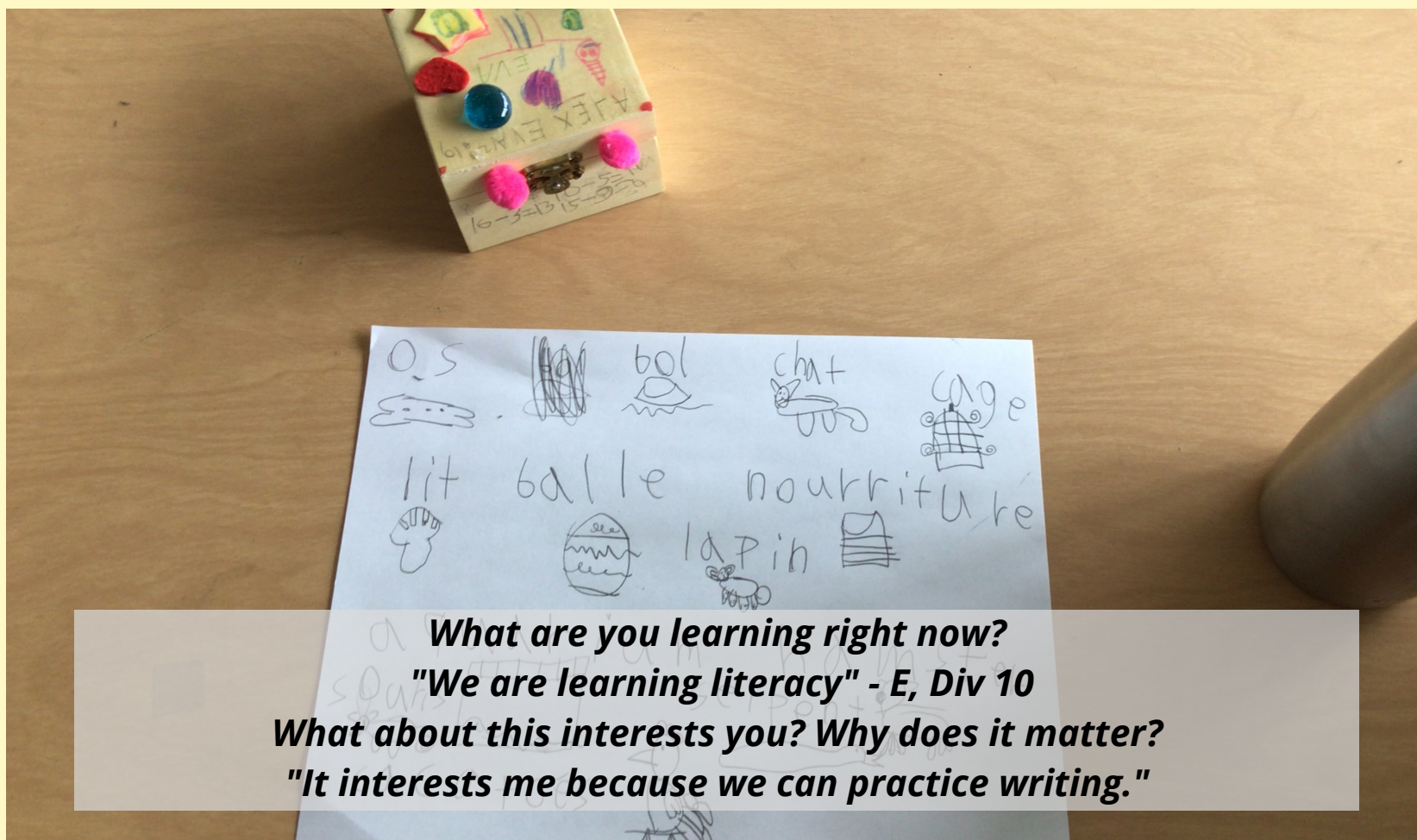
ON THE HORIZON...



April 11 & 12 - Early Dismissal @1:45pm
April 13 - Evacuation Drill & PAC Meeting
April 15 - No School
April 18 - No School
April 25 - Staff Meeting
April 25 - 29 - Education Week

Captured Moments

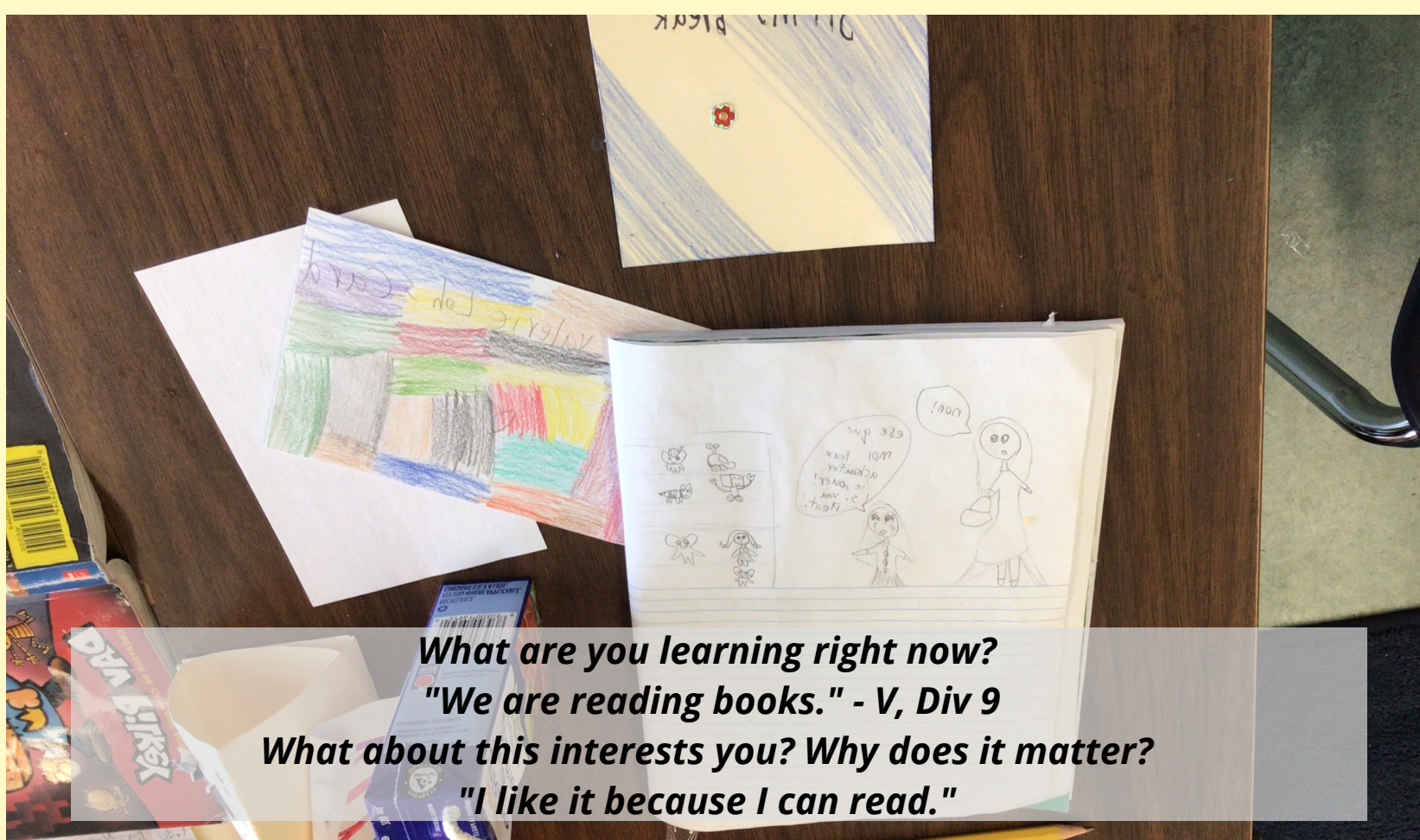
Here is what happened this week, told through the eyes of our Gr. 6/7 **learning detectives**. Students in Div. 6 took time to capture learning moments throughout the week. How might we include all student voices?



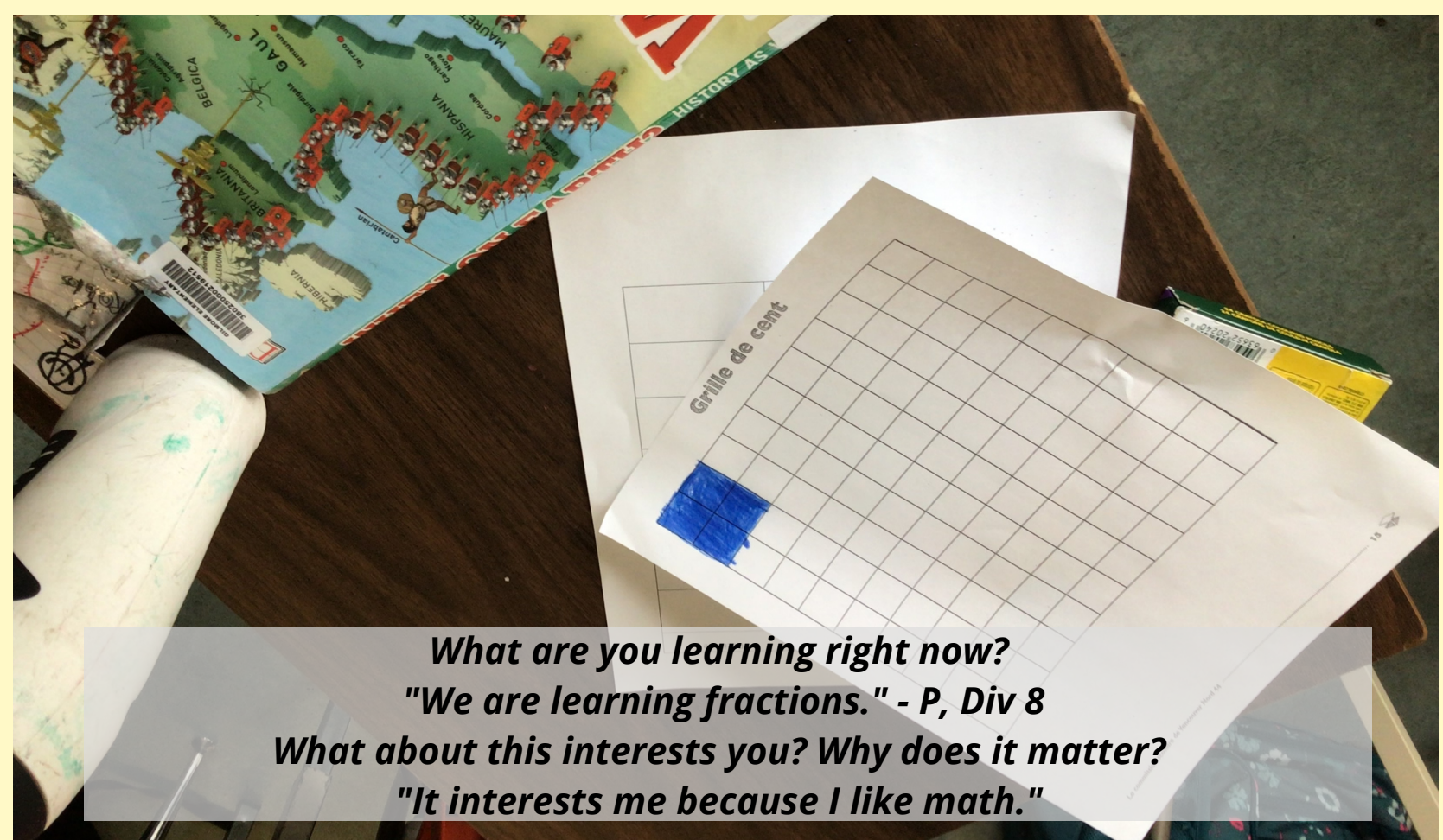
What are you learning right now?
"We are learning literacy" - E, Div 10
What about this interests you? Why does it matter?
"It interests me because we can practice writing."



What are you learning right now?
"We are learning French." - F, Div 11
What about this interests you? Why does it matter?
"It interests me because when I go home I can play French games."



What are you learning right now?
"We are reading books." - V, Div 9
What about this interests you? Why does it matter?
"I like it because I can read."



What are you learning right now?
"We are learning fractions." - P, Div 8
What about this interests you? Why does it matter?
"It interests me because I like math."

WHERE AM I? Art Installation

WHERE AM I? is a travelling exhibition, which was curated by the ArtStarts Gallery team on the unceded territories of the xwməθkwəy̓əm (Musqueam), Skwxwú7mesh (Squamish), and səlílwətaʔt (Tsleil-Waututh) Nations.

As WHERE AM I? travels from one place to another, it awakens new perspectives and different ways of engaging with our identities and the places where we live. It moves across territories, and invites us to ground ourselves on the lands where we are learning on by practicing respect for and relationship with the lands' traditional hosts.

Through movement, storytelling, and sound mapping activities, this exhibition encourages learners to consider the following questions:

Where am I situated?

What is my relationship to this place? Who do I share this place with?

How can I care for this place?

How does this place take care of me?

It has been installed near the playground and will be here for 2 weeks before moving to another school.



IMPORTANT!

Please RESPECT the art exhibition and remind your children to make safe choices before AND after school.

DO NOT CLIMB OR PEEL OFF PARTS OF THIS INSTALLATION.

Reminders

Student Attendance

Please report any absences, lates, early dismissals, etc. to our Early Warning Line at (604) 668-6637

If your child(ren) will be arriving late or leaving early, please drop off/pick up at the office in order for us to adjust attendance accordingly.

Parking

Please note that the **Elsmore Parking Lot** is for **staff only**. Please park at the **Kelmore Parking Lot** for **drop off/pick up**, and respect City bylaw parking signs.



Welcome to Kindergarten
Wednesday, June 1st

HOT LUNCH IS BACK

Don't forget to place your orders!
Information [HERE](#)

Kind reminders to please complete the Daily Health Check

Daily Health Check

Everyone going into a school or site must complete a daily health check, including staff, students, and visitors. A daily health check means checking yourself or your child for new symptoms of illness, including symptoms of COVID-19.

Symptoms of illness (including COVID-19) include:

- Fever or chills
- Difficulty breathing
- Runny nose
- Headache
- Body aches
- Cough
- Sore throat
- Sneezing
- Loss of sense of smell or taste
- Loss of appetite
- Extreme fatigue or tiredness
- Nausea or vomiting
- Diarrhea

If you are sick or feel unwell, stay at home. This is important to stop the spread of illness, including COVID-19, in schools and worksites.

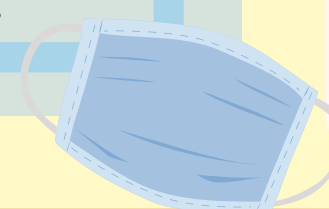
You can attend school/work if:

- Your symptoms are consistent with a previously diagnosed health condition (e.g., seasonal allergies), OR
- You have existing symptoms that have improved to where you feel well enough to return to regular activities, AND
- You are not required to self-isolate, or your self-isolation period is over (based on a positive COVID-19 test result, if taken).

Most up-to-date Daily Health Check can be found [HERE](#)

Helpful COVID-19 Flow Chart is [HERE](#)

Mask wearing is now a matter of personal choice and is no longer mandatory in our schools. Everyone's choice is supported and will continue to be respected.



PAC Fundraiser

The James Gilmore PAC has partnered with Pedro's Organic Coffee and Krispy Kreme Donuts for a perfect pair fundraiser!

Last day to order is April 4th.

More information [HERE](#)

APRIL IS SIKH HERITAGE MONTH

The first Gurdwara Sahib in BC was also the very first in all of North America. The Khalsa Diwan Society was established in 1906 and the 2nd avenue Gurdwara was built in 1908. This Gurdwara served many purposes for the budding Sikh community in Vancouver. It was a place where Sikhs could come to learn.



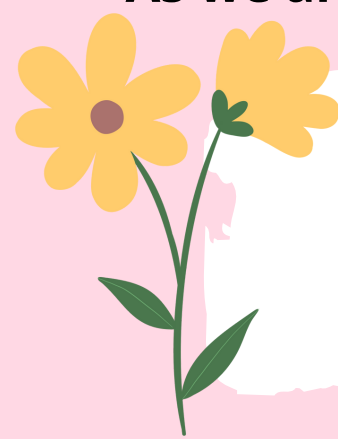
GRAD COMMITTEE MEETING

Mon, April 4th @ 7pm

Zoom link: [HERE](#)
Meeting ID: 644 4827 4397
Password: #Gilmore1

Dress for the weather!

As we are getting closer to Spring, it might be helpful to bring:



rain coat



rain boots



2-3 sets of extra clothes
(including socks)

