

ÉCOLE ÉLÉMENTAIRE GILMORE ELEMENTARY



20 - 24 juin | June 20 -24

Monday, June 20

Staff Appreciation
(from PAC)



Tuesday, June 21

National Indigenous
Peoples Day



Wednesday, June 22

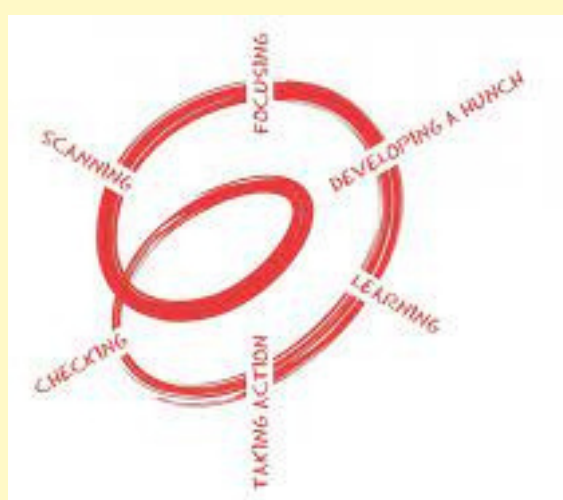
Thursday, June 23

Friday, June 24

Grade 7 Farewell
Congratulations!



Our School Story



We revisited our scanning data through collaborative dialogue. Check out our [new action post](#) to see what one small action we can take and how we will know it's making a difference in student learning.

Next steps: Make purposeful observations to gather evidence on how our "one small action" is helping students communicate their thinking and connections.

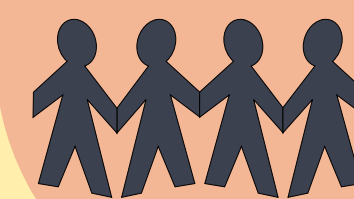
ON THE HORIZON...

- Jun 27: Pizza Day
- Jun 28: Reports available on MyEd
- Jun 29: Assembly - Last Day of School
- Jun 30: Admin Day (No school for students)

STAFF VS STUDENTS BASKETBALL!

Take a look at what happened this week...

The Gilmore grade 7 students had a blast at the basketball game today! Take a look at these amazing moments...



Grade 7 vs. Staff
2021 - 2022



Thank you for
the teamwork!



National Indigenous Peoples Day:

June 21st

Students have been engaged with learning about truth and reconciliation and the diverse cultures of Indigenous Peoples throughout the year. Take a "Learning Walk" to learn more about and to celebrate the heritage, diverse cultures, and outstanding contributions of First Nations, Inuit, and Métis peoples!



Check back for student reflections!

Reminders

Student Attendance

Please report any absences, lates, early dismissals, etc. to our **Early Warning Line at (604) 668-6637**

If your child(ren) will be arriving late or leaving early, please drop off/pick up at the office in order for us to adjust attendance accordingly.

Parking

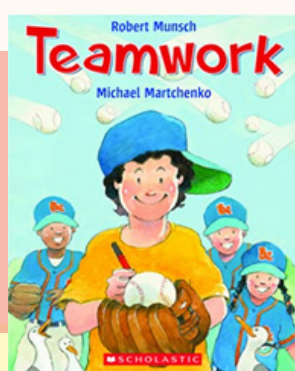
Please note that the **Elsmore Parking Lot** is for **staff only**. Please park at the **Kelmore Parking Lot** for **drop off/pick up**, and respect City bylaw parking signs.

School Calendar Information and Important Dates for the 2022/23 School Year can be found [here](#)

HOT LUNCH
Don't forget to place your orders! Information [HERE](#)

Notice of Late Return Forms can be found [here](#)

"IF YOU HAVE ANY GENTLY USED ROBERT MUNSCHE BOOKS, PLEASE CONSIDER DONATING THEM TO THE LIBRARY. THANK YOU"



STAFF APPRECIATION: IF YOU'D LIKE TO CONTRIBUTE SOME SNACKS & TREATS, PLEASE DROP THEM OFF ON MONDAY MORNING! - PAC

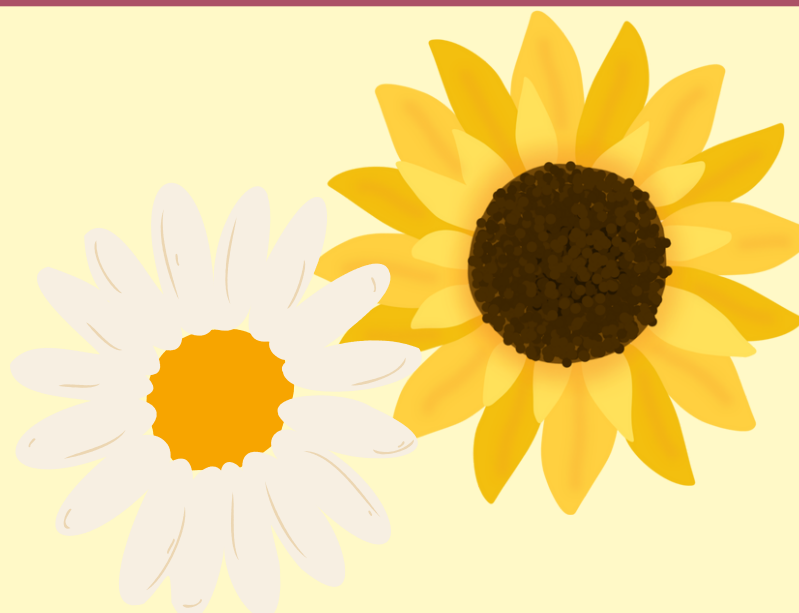
Please complete the Daily Health Check

Everyone going into a school or site **must complete a daily health check**, including staff, students, and visitors. A daily health check means checking yourself or your child for new symptoms of illness, including symptoms of COVID-19. Symptoms of illness (including COVID-19) include:

- Fever or chills
- Difficulty breathing
- Runny nose
- Headache
- Body aches
- Cough
- Sore throat
- Sneezing
- Loss of sense of smell or taste
- Loss of appetite
- Extreme fatigue or tiredness
- Nausea or vomiting
- Diarrhea

More information can be found [HERE](#)

Wearing a mask is a personal choice. Lets all continue to be kind to one another.



Check our [website](#) for more details about a Summer, Skate, and Golf pass



REPORT CARDS AND PROGRESS REPORTS

Please note that we will not be providing paper copies. It will be stored in MyEducation BC Parent Portal for you to view. More information can be found [HERE](#) on how to access them through myEd.

REPORTS will be available on MyEducation BC Parent Portal on June 28th.

