



**James Gilmore
Elementary**
8380 Elsmore Road
Richmond, BC
V7C 2A1

Trevor Shuto
Principal

School Schedule:
8:40 - Warning Bell
8:45 - Classes Begin
10:10 - 10:25 - Recess
11:50 - 12:42 - Lunch
2:45 - Dismissal

School - 604-668-6268
Early Warning 604-668-6637

Monday	
Tuesday	
Wednesday	Hot Lunch - Frozen Yogourt
Thursday	
Friday	Cancelled - Movie Night

Important Dates!	
Dec 9th	Hot Lunch - Poke Bowl
Dec 9th	Immunization Clinic Gr. 6 and 7
Dec 16th	Hot Lunch - Taco Luis
Dec 18th	Winter Concert 6:00 Dress Rehearsal 1:00
Dec 19th	Learning Updates - Reports Live on MyEd

Dear Gilmore Families,

Newsletters in this format will be one of the main sources of communication that you can expect to receive from the Gilmore office once again this year. Welcome to Gilmore!

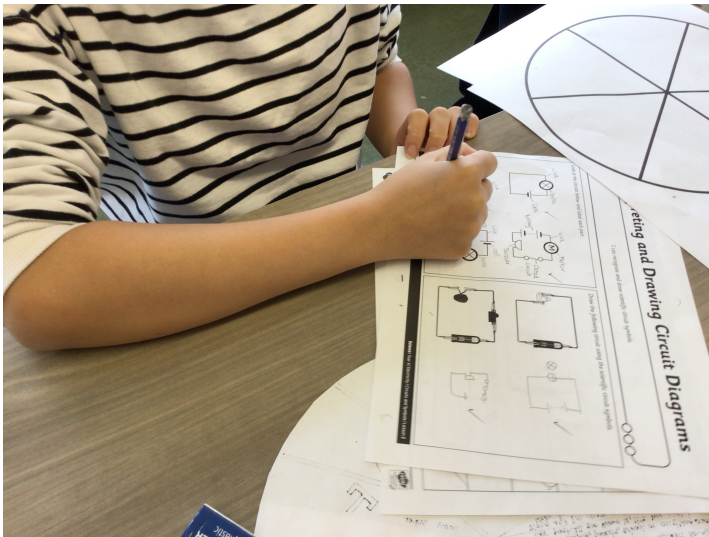
- Movie Night Postponed:** Our Gilmore Movie Night that was going to be held on December 6th will be postponed until January. There will be no Movie Night on Dec. 6th.
- Lacrosse in Gym Class:** On December 2nd 3rd and 4th, we will have a Lacrosse Coach from Richmond Lacrosse come to our PHE classes to run a session with the kids. Gr. K/1 to Gr. 2/3 classes will have one 40 minute session each and Gr. 3/4 to Gr. 6/7 will have two 40 minute sessions each. **If kids have their own Lacrosse sticks please feel free to bring them to school on those days.**
- PAC Purdys Fundraiser:** Thank you for supporting the Gilmore PAC Purdys Winter Fundraiser. Please come pick up your orders on Thursday December 5 (845am-9am or 245pm-3pm) or Friday December 6 (845am-9am or 245pm-3pm). The pick up location will be in the front foyer (next to the office). Please email us at gilmorepacsd38@gmail.com if you can't make the pickup times/dates and we can arrange a different option.
- Gilmore Winter Concert:** will take place on December 18th at 6:00. More information to come.
- Learning Updates - Reports:** will go live on MyEd Parent Portal on December 19th at 3:00. Please ensure that you can access / have updated your password prior to this.
- Toy Drive for Gilmore Gardens:** please see a student driven initiative posted below.
- Affordability Fund Reminder** - The Student and Family Affordability Fund is still in place if you require financial assistance with school-related costs such as school and course fees, workbooks, specialty supplies, field trips and other school-related charges and costs. Please reach out to Mr. Shuto if you could benefit from this fund.
- Feeding Futures** - The provincial government announced a new Feeding Futures School Program Fund, designed to help with nutritional supports for students. We are working closely with a District Staff Member and we want to ensure families are aware to reach out to Mr. Shuto if you require support. Requests will be treated with dignity and your privacy will be respected.

As always, we thank you for your support and look forward to teaching, learning with, and supporting our Gilmore students this year! Sincerely, Trevor Shuto and the Gilmore Staff

Gilmore's School Story

We continue to work with our school language at Gilmore to continue to build expectations of behaviour and a culture of care. The students are gaining a better understanding of what this means and how they can demonstrate this at school. CARE FOR SELF, CARE FOR OTHERS, CARE FOR PLACE. You can help by discussing the language with your children at home as well.

Thank you for your support, it is much appreciated!



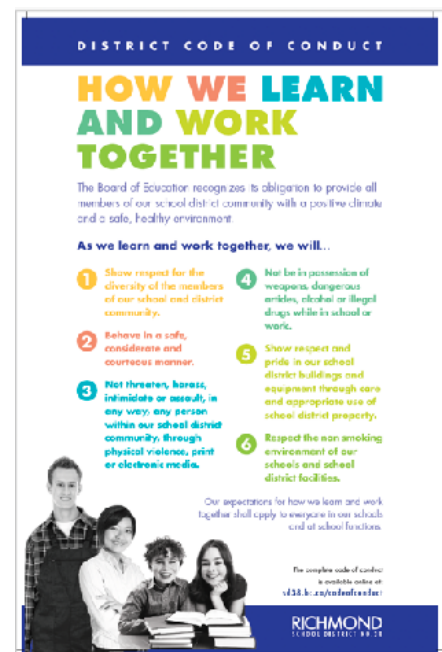
Window Into Learning

What are you learning about? Why is it important?

"I am learning about circuits and right now we are drawing schematic diagrams of different circuits and labeling the parts. We also have to look at drawn circuits and figure out if they will light a bulb or not based on how they are drawn. It is fun! I might want to be an electrician one day".

School District / Gilmore Code of Conduct

This Code of Conduct is used at Gilmore and around the District to help remind all of us of the expectations in all School District Buildings as well as when participating in all School District events.





Gilmore's Return-It Account

Gilmore has a "Return It" account at the Blundell Return It Location to help raise money to subsidize our Grade 6 trip to camp this year. The Phone number associated with the account is 604-668-6268. Please use clear bags with no pull strings when returning containers. Please don't crush / flatten containers. Please only put a max of 12 glass bottles in each bag. Please remove garbage from bags before returning. Thank you for your support!

SD38 and Multi-faith Society Reconciliation, Diversity, Equity and Inclusion Calendars

An inclusive calendar is a living document that shares dates of significance, recognition, and celebration. Dates for each month will be highlighted here.

November 2024						
S	M	T	W	T	F	S
					1	2
3	4	5	6	7	8	9
10	11	12	13	14	15	16
17	18	19	20	21	22	23
24	25	26	27	28	29	30

Adoption Awareness Month; Lebanese Heritage Month

- 1 Musqueam Day
- 1-15 Diwali 🕯️ 🪔
- 7 National Inuit Day
- 8 Indigenous Veterans Day
- 11 Remembrance Day
- 15 Birthday of Guru Nanak Dev Sahib 🕉️
- 16 International Day for Tolerance
- 16 Louis Riel Day
- 18-22 Multiculturalism Week
- 20 Transgender Day of Remembrance
- 20 World Child Day
- 23 Holodomor Memorial Day
- 24 Martyrdom of Guru Tegh Bahdur 🕉️

DECEMBER 2024



SUNDAY	MONDAY	TUESDAY	WEDNESDAY	THURSDAY	FRIDAY	SATURDAY
<ul style="list-style-type: none"> ☾ Little Spirit Moon ☾ Big Spirit Moon ✝️ First Sunday of Advent (W) 🟡 World AIDS Day 🇷🇴 Union Day (Romania) ● New Moon 	<ul style="list-style-type: none"> 🇷🇺 Int Day for the Abolition of Slavery (UN) 🇦🇪 National Day (UAE) 🇻🇪 National Day (Laos) 	<ul style="list-style-type: none"> 🇺🇳 Int Day of Persons with Disabilities (UN) 		<ul style="list-style-type: none"> 🇺🇳 Int Volunteer Day (UN) 	<ul style="list-style-type: none"> 🇨🇦 Nat Day of Rem / Action on Violence Against Women (Canada) 🇫🇮 Independence Day (Finland) 🇪🇸 Constitution Day (Spain) 	<ul style="list-style-type: none"> 🇺🇳 Int Civil Aviation Day (UN) 🇺🇸 Pearl Harbor Remembrance Day (USA)
<ul style="list-style-type: none"> 🌕 Bodhi / Rôhatsu (Awakening) Day 	<ul style="list-style-type: none"> 🇺🇳 Int Anti-Corruption Day (UN) 	<ul style="list-style-type: none"> 🇺🇳 Human Rights Day (UN) 🇹🇭 Constitution Day (Thailand) 	<ul style="list-style-type: none"> 🇲🇦 Mas'âl 🇮🇳 Maunajiyaras 🇺🇳 Int Mountain Day (UN) 		<ul style="list-style-type: none"> 🇰🇭 Birth Date of the Aga Khan 🇸🇪 Luciadagen (Sweden) 	
<ul style="list-style-type: none"> 🇸🇲 Sanghamitta Day 🇺🇸 Bill of Rights Day (USA) 🌕 Full Moon 	<ul style="list-style-type: none"> 🇧🇭 National Day (Bahrain) 🇧🇩 Bijoy Dibash (Victory Day) (Bangladesh) 		<ul style="list-style-type: none"> 🇺🇳 Int Migrants Day (UN) 🇶🇦 National Day (Qatar) 		<ul style="list-style-type: none"> 🇺🇳 Int Human Solidarity Day (UN) 	<ul style="list-style-type: none"> 🇮🇷 Yaldâ Night 🇯🇵 Toji-taisai 🇮🇳 Yule 🇮🇳 Pancha Ganapati 🌞 December Solstice
	<ul style="list-style-type: none"> 🇯🇵 Tenno; Tanjôji (The Emperor's Birthday) (Japan) 🇲🇽 Festival of the Radishes (Mexico) 		<ul style="list-style-type: none"> 🇨🇷 Christmas (W, E - New Calendar) 🇮🇸 Eve of Hanukkah 	<ul style="list-style-type: none"> 🇮🇷 Anniversary of the Death of Prophet Zarathustra 🇮🇸 First Day of Hanukkah 🇰🇪 Kwanzaa 🇨🇦 Boxing Day (Canada, UK) 		
<ul style="list-style-type: none"> 🇲🇳 Independence Day (Mongolia) 	<ul style="list-style-type: none"> 🇸🇦 Sharaf 🇵🇭 Rizal Day (Philippines) ● New Moon 	<ul style="list-style-type: none"> 🇯🇵 Ghambar Madyarem begins 🇯🇵 Ômisoka (Japan) 				

Please see information about other events and opportunities below!



TOY DRIVE FOR GILMORE GARDENS

BRINGING JOY TO SENIORS AT GILMORE GARDENS

We are collecting new (or gently used), huggable stuffed animals to cheer up the residents at Gilmore Gardens.

How You Can Help:

- **Donate stuffed animals:** Teddy bears, bunnies, pigs, or any other clean stuffed animal in good condition
- **Drop off your donation** in the bin in the foyer of our school
- **Do before:** December 13th

Why Stuffed Animals?

You may think stuffed animals are associated with younger kids, but really, who doesn't love the feeling of being hugged by a cute little teddy bear or pig? Surely the seniors would agree; those who don't have family nearby may experience loneliness, and we hope the stuffed animals will bring extra comfort during the holiday season.

SCHOOL DISTRICT 38'S

INCENTIVE OUTDOOR PROGRAM 2024/2025

*For creative, inclusive and motivated students with a passion
for the outdoors & advancing their academics. (GRADES 8-10)*

APPLICATION DUE WEDNESDAY FEB 5 2025

Need more info?

Attend A.R.MacNeill's Open House
Thur. Jan. 23rd 2025

Join our Parent Info Session @ 6:00pm
and find our booth!

Scan QR Code for the application or go to
www.incentiveoutdoorprogram.wordpress.com

