



**James Gilmore
Elementary**
8380 Elsmore Road
Richmond, BC
V7C 2A1

Trevor Shuto
Principal

School Schedule:
8:40 - Warning Bell
8:45 - Classes Begin
10:10 - 10:25 - Recess
11:50 - 12:42 - Lunch
2:45 - Dismissal

School - 604-668-6268
Early Warning 604-668-6637

Monday	No School - Pro D Day
Tuesday	
Wednesday	
Thursday	
Friday	

Important Dates!	
Dec 4th	Hot Lunch - Frozen Yogurt
Dec 6th	Movie Night
Dec 9th	Hot Lunch - Poke Bowl
Dec 9th	Immunization Clinic Gr. 6 and 7
Dec 16th	Hot Lunch - Taco Luis

Dear Gilmore Families,

Newsletters in this format will be one of the main sources of communication that you can expect to receive from the Gilmore office once again this year. Welcome to Gilmore!

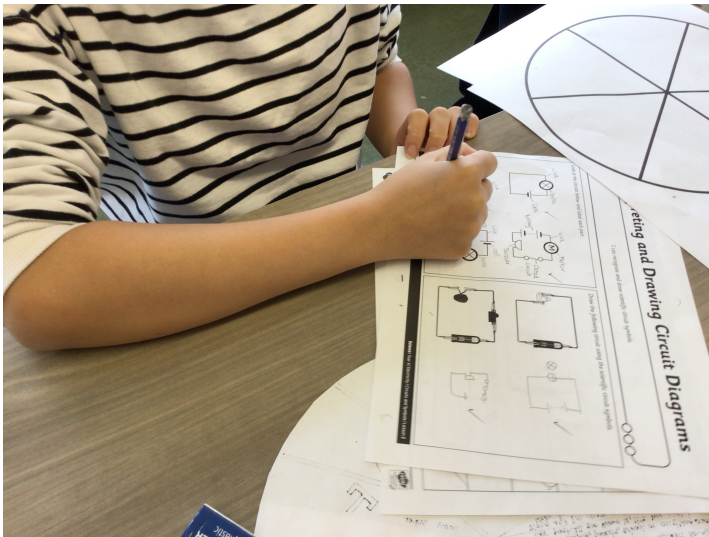
- Morning School Entry:** Thank you for your flexibility as we changed our morning entry process, which has gone very well. The warning bell will continue to ring at 8:40 the main / outside classroom doors will open and will remain unlocked / open until 8:46. Please continue to enter through your class assigned door to avoid congestion in doorways and hallways as we enter the school in a calm and respectful way. If students are late, please enter the main front door and check in at the office so that we can ensure we keep track of all students.
- Return It Account:** Thank you for those donating to our Return It account to help raise money for our Grade 6 Outdoor Ed Trip. We currently have \$193.00 in the account! **We have had warnings on our account. Please use clear bags with no pull strings when returning containers. Please don't crush / flatten containers. Please only put a max of 12 glass bottles in each bag. Please remove garbage from bags before returning. Thank you for your support!**
- Gilmore Winter Concert:** will take place on December 18th at 6:00. More information to come.
- Learning Updates - Reports:** will go live on MyEd Parent Portal on December 19th at 3:00. Please ensure that you can access / have updated your password prior to this.
- Toy Drive for Gilmore Gardens:** please see a student driven initiative posted below.
- Affordability Fund Reminder -** The Student and Family Affordability Fund is still in place if you require financial assistance with school-related costs such as school and course fees, workbooks, specialty supplies, field trips and other school-related charges and costs. Please reach out to Mr. Shuto if you could benefit from this fund.
- Feeding Futures -** The provincial government announced a new Feeding Futures School Program Fund, designed to help with nutritional supports for students. We are working closely with a District Staff Member and we want to ensure families are aware to reach out to Mr. Shuto if you require support. Requests will be treated with dignity and your privacy will be respected.

As always, we thank you for your support and look forward to teaching, learning with, and supporting our Gilmore students this year! Sincerely, Trevor Shuto and the Gilmore Staff

Gilmore's School Story

We continue to work with our school language at Gilmore to continue to build expectations of behaviour and a culture of care. The students are gaining a better understanding of what this means and how they can demonstrate this at school. CARE FOR SELF, CARE FOR OTHERS, CARE FOR PLACE. You can help by discussing the language with your children at home as well.

Thank you for your support, it is much appreciated!



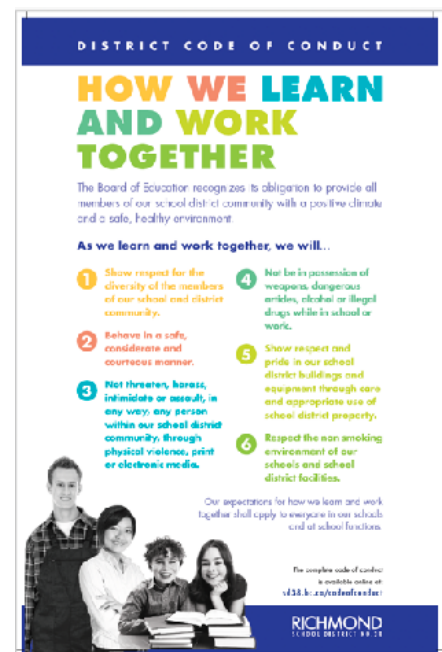
Window Into Learning

What are you learning about? Why is it important?

"I am learning about circuits and right now we are drawing schematic diagrams of different circuits and labeling the parts. We also have to look at drawn circuits and figure out if they will light a bulb or not based on how they are drawn. It is fun! I might want to be an electrician one day".

School District / Gilmore Code of Conduct

This Code of Conduct is used at Gilmore and around the District to help remind all of us of the expectations in all School District Buildings as well as when participating in all School District events.





Gilmore's Return-It Account

Gilmore has a "Return It" account at the Blundell Return It Location to help raise money to subsidize our Grade 6 trip to camp this year. The Phone number associated with the account is 604-668-6268. Please use clear bags with no pull strings when returning containers. Please don't crush / flatten containers. Please only put a max of 12 glass bottles in each bag. Please remove garbage from bags before returning. Thank you for your support!

SD38 and Multi-faith Society Reconciliation, Diversity, Equity and Inclusion Calendars

An inclusive calendar is a living document that shares dates of significance, recognition, and celebration. Dates for each month will be highlighted here.

November 2024						
S	M	T	W	T	F	S
					1	2
3	4	5	6	7	8	9
10	11	12	13	14	15	16
17	18	19	20	21	22	23
24	25	26	27	28	29	30

Adoption Awareness Month; Lebanese Heritage Month

- 1 Musqueam Day
- 1-15 Diwali 🕉️ 🪔
- 7 National Inuit Day
- 8 Indigenous Veterans Day
- 11 Remembrance Day
- 15 Birthday of Guru Nanak Dev Sahib 🕉️
- 16 International Day for Tolerance
- 16 Louis Riel Day
- 18-22 Multiculturalism Week
- 20 Transgender Day of Remembrance
- 20 World Child Day
- 23 Holodomor Memorial Day
- 24 Martyrdom of Guru Tegh Bahdur 🕉️

NOVEMBER 2024						
SUNDAY	MONDAY	TUESDAY	WEDNESDAY	THURSDAY	FRIDAY	SATURDAY
					1 Freezing Moon Diwali (Hindu, Jain and Sikh celebration) Bandhi Chhor Divas Mahavira Nirvana All Saints Day (W) National Native American Heritage Month (US) New Moon	2 Vikram New Year (2081) Jain New Year & Day of Enlightenment Birth of The Bab
3 The Birth of Bahá'í'láh Qudrat Bunka No Hi (Culture Day) (Japan) Independence Day (Panama) Daylight Saving Time ends (USA, Canada)	4	5 Guy Fawkes Day (UK)	6 Jnana Panchmi World Day to Protect the Environment in War (UN) Constitution Day (Dominican Republic / Puerto Rico)	7	8 Indigenous Veterans Day (Canada)	9 Independence Day (Cambodia)
10 Remembrance Sunday (UK) World Science Day (UNESCO)	11 Veteran's Day (USA) Remembrance Day (Canada) Independence Day (Poland) Armistice Day (France)	12	13 World Kindness Day	14 World Diabetes Day (UN)	15 Kaithina ends Dev Diwali Birth date of Guru Nanak Dev Ji Chaturmas ends Birth date of Shrinad Rajchandra Shichi-Go-San (Seven-Five-Three) (Japan) Republic Day (Brazil) Full Moon (Supermoon)	16 Int Day for Tolerance (UN)
17 National Addictions Awareness Week (Canada) International Restorative Justice Week World Day of Remembrance for Road Traffic Victims (WHO)	18 Independence Day (Lithvia, Morocco)	19	20 Africa Industrialization Day (UN) Universal Children's Day (UN)	21 World Television Day (UN)	22 Qawl Independence Day (Lebanon)	23 Ninamesal (Kinro Kansha No Hi / Labour Thanksgiving Day) (Japan)
24 Tiantai/ Tendai Memorial Martyrdom of Guru Tegh Bahadur Ji	25 Day of the Covenant Int Day for the Elim of Violence Against Women (UN) Statehood Day (Bosnia and Herzegovina)	26	27 Ascension of 'Abdu'l-Baha	28 Thanksgiving Day (USA) Independence Day (Albania)	29 Native American Heritage Day (USA) Int Day of Solidarity with Palestinian People (UN)	30 St. Andrew's Day (Scotland) Independence Day (Barbados)

Please see information about other events and opportunities below!



TOY DRIVE FOR GILMORE GARDENS

BRINGING JOY TO SENIORS AT GILMORE GARDENS

We are collecting new (or gently used), huggable stuffed animals to cheer up the residents at Gilmore Gardens.

How You Can Help:

- **Donate stuffed animals:** Teddy bears, bunnies, pigs, or any other clean stuffed animal in good condition
- **Drop off your donation** in the bin in the foyer of our school
- **Do before:** December 13th

Why Stuffed Animals?

You may think stuffed animals are associated with younger kids, but really, who doesn't love the feeling of being hugged by a cute little teddy bear or pig? Surely the seniors would agree; those who don't have family nearby may experience loneliness, and we hope the stuffed animals will bring extra comfort during the holiday season.



Parent Education Session: District Program Options for Kindergarten

The Richmond School District provides two district program options for students entering Kindergarten. We invite families with children registering for the 2025-2026 school year to join district staff to learn more about Early French Immersion and Montessori programs.

Join us for an informative session focused on District Program Options (Early French Immersion and Montessori) for Kindergarten learners.

Topics will include:

- Early French Immersion (EFI) Program
- Montessori Program
- Registration Information
- Important Dates to Note
- Frequently Asked Questions



Virtual on Microsoft Teams

(meeting link will be sent after registration is submitted)



Tuesday, November 26, 2024



6:00pm



**Hosts: Brooke Douglas, Gordon Fitt,
Linda Chau, Catherine Jule**

Register Here!



SCHOOL DISTRICT 38'S

INCENTIVE OUTDOOR PROGRAM 2024/2025

For creative, inclusive and motivated students with a passion for the outdoors & advancing their academics. (GRADES 8-10)

APPLICATION DUE WEDNESDAY FEB 5 2025

Need more info?

Attend A.R.MacNeill's Open House
Thur. Jan. 23rd 2025

Join our Parent Info Session @ 6:00pm
and find our booth!

Scan QR Code for the application or go to
www.incentiveoutdoorprogram.wordpress.com

