



**James Gilmore
Elementary**
8380 Elsmore Road
Richmond, BC
V7C 2A1

Trevor Shuto
Principal

School Schedule:
8:40 - Warning Bell
8:45 - Classes Begin
10:10 - 10:25 - Recess
11:50 - 12:42 - Lunch
2:45 - Dismissal

School - 604-668-6268
Early Warning 604-668-6637

Winter Break Schedule	
Monday	Hot Lunch - Taco Luis
Tuesday	
Wednesday	Winter Concert - 1:15 Dress Rehearsal 6:00 Night Concert
Thursday	3:00 - Learning Updates and Reports published to MyEd Parent Portal
Friday	Last Day of School before Winter Break

Important Dates!	
Jan 6th	First Day back at School after Winter Break
Jan 14th	Community Breakfast
Jan 27th	No School - Pro D Day
Feb 14th	No School - Pro D Day
Feb 17th	No School - Holiday

Dear Gilmore Families,

Newsletters in this format will be one of the main sources of communication that you can expect to receive from the Gilmore office once again this year. Welcome to Gilmore!

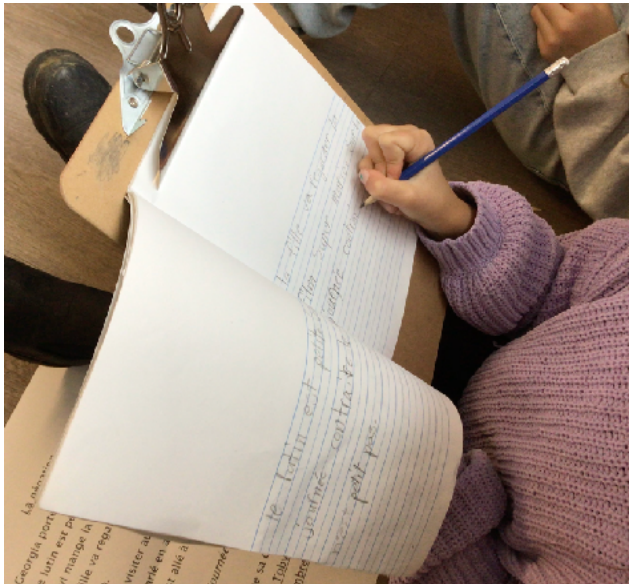
- Gilmore Winter Concert:** will take place on December 18th at 1:15 for a dress rehearsal (families welcome to attend) and 6:00 (families welcome to attend). Both will take place in the gym.
- Learning Updates - Reports and ELL Reports:** will go live on MyEd Parent Portal on December 19th at 3:00. If you are a parent of an ELL student you will also see your child's ELL progress report in the MyEd Parent Portal when you login. This is new this year. Please save a copy of the PDF of any reports that you see so that you can access them for your future reference. Please do this before January 19th, 2025 as that is when access expires. Please also ensure that you can access / have updated your password prior to this date.
- Spirit Wear Orders:** For those of you who ordered, please see a message from PAC below. Sportfactor has let us know that the Spirit Wear delivery has been delayed to early January. The PAC will update Admin and office staff as soon as we have a more accurate date and then items will go home. Apologies for the delay! - Gilmore PAC
- Affordability Fund Reminder** - The Student and Family Affordability Fund is still in place if you require financial assistance with school-related costs such as school and course fees, workbooks, specialty supplies, field trips and other school-related charges and costs. Please reach out to Mr. Shuto if you could benefit from this fund.
- Feeding Futures** - The provincial government announced a new Feeding Futures School Program Fund, designed to help with nutritional supports for students. We are working closely with a District Staff Member and we want to ensure families are aware to reach out to Mr. Shuto if you require support. Requests will be treated with dignity and your privacy will be respected.

As always, we thank you for your support and look forward to teaching, learning with, and supporting our Gilmore students this year! Sincerely, Trevor Shuto and the Gilmore Staff

Gilmore's School Story

We continue to work with our school language at Gilmore to continue to build expectations of behaviour and a culture of care. The students are gaining a better understanding of what this means and how they can demonstrate this at school. CARE FOR SELF, CARE FOR OTHERS, CARE FOR PLACE. You can help by discussing the language with your children at home as well.

Thank you for your support, it is much appreciated!



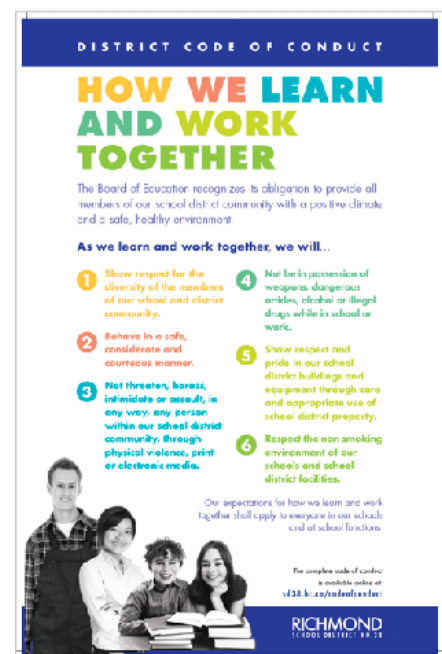
Window Into Learning

What are you learning about? Why is it important?

“I am learning how to write in French with new words. This will help us learn French and get better at writing”

School District / Gilmore Code of Conduct

This Code of Conduct is used at Gilmore and around the District to help remind all of us of the expectations in all School District Buildings as well as when participating in all School District events.





Gilmore's Return-It Account

Gilmore has a "Return It" account at the Blundell Return It Location to help raise money to subsidize our Grade 6 trip to camp this year. The Phone number associated with the account is 604-668-6268. Please use clear bags with no pull strings when returning containers. Please don't crush / flatten containers. Please only put a max of 12 glass bottles in each bag. Please remove garbage from bags before returning. Thank you for your support!

SD38 and Multi-faith Society Reconciliation, Diversity, Equity and Inclusion Calendars

An inclusive calendar is a living document that shares dates of significance, recognition, and celebration. Dates for each month will be highlighted here.

December 2024						
S	M	T	W	T	F	S
1	2	3	4	5	6	7
8	9	10	11	12	13	14
15	16	17	18	19	20	21
22	23	24	25	26	27	28
29	30	31				

- 2 International Day for Abolition of Slavery
- 3 Int'l Day of Persons with Disabilities
- 6 National Day of Remembrance and Action on Violence Against Women
- 8 Bodhi Day 🌸
- 9 International Day of Commemoration and Dignity of the Victims of the Crime of Genocide and of the Prevention of this Crime
- 10 Human Rights Day
- 13 Salgirah
- 21 Winter Solstice (Northern Hemisphere)
- 24 Christmas Eve †
- 24 Quviasukvik Begins
- 25 Christmas †
- 25 Hannukah (ends Jan 2) 🕯️

DECEMBER 2024

SUNDAY	MONDAY	TUESDAY	WEDNESDAY	THURSDAY	FRIDAY	SATURDAY
1 ☾ Little Spirit Moon ☾ Big Spirit Moon ✝️ Int'l Sunday of Advent (W) 🌐 World AIDS Day ☐ Inuvit Day (Rorortaria) ● New Moon	2 ☾ Int'l Day for the Abolition of Slavery (UN) ☐ National Day (UK) ☐ National Day (Lao) ☐ National Day (Lao)	3 ☾ Int'l Day of Persons with Disabilities (UN)	4	5 ☾ Int'l Volunteer Day (UN)	6 ☾ Nat. Day of Remembrance on Violence Against Women (Canada) ☐ Independence Day (Finland) ☐ Constitution Day (Spain)	7 ☾ Int'l Civil Aviation Day (UN) ☐ Pearl Harbor Remembrance Day (USA)
8 ☾ Bodhi Day (Awakening) Day	9 ☾ Int'l Anti-Corruption Day (UN)	10 ☾ Human Rights Day (UN) ☐ Constitution Day (Tanzania)	11 ☾ Yashu ☾ Mazalovans ☾ Int'l Mountain Day (UN)	12	13 ☾ Birth Date of the Aga Khan ☐ Luadagen (Sweden)	14
15 ☾ Sanghmitta Day ☐ Bill of Rights Day (USA) ☐ Full Moon	16 ☐ National Day (Schriain) ☐ Day of Victory (Victory Day) (Bangladesh)	17	18 ☾ Int'l Migrants Day (UN) ☐ National Day (Cuba)	19	20 ☾ Int'l Human Solidarity Day (UN)	21 ☾ Yaldiz Night ☐ Tohi-to-est ☾ Yule ☐ Pencha Canop: ☐ December Solstice
22 ☐ Tenno Sengoku (The Emperor's Birthday) (Japan) ☐ Festival of the Rastafree (Mexico)	23	24 ☾ Christmas (W. E. - New Calendar) ☐ Eve of Hanukkah	25 ☾ Anniversary of the Death of Prophet Zarathustra ☐ Festival of Hanukkah ☐ Kwazoo ☐ Boxing Day (Canada, UK)	26	27	28
29 ☐ Independence Day (Nicaragua)	30 ☾ Sharak ☐ Rizal Day (Philippines) ● New Moon	31 ☾ Shember Malovarem begins ☐ Omisoka (Japan)				

Please see information about other events and opportunities below!



Date: January 14, 2025
Time: 6-8 p.m.
Where: Zoom
Register: QR code below

ONLINE PUBLIC OPEN HOUSE LONG-RANGE FACILITIES PLAN

The Richmond School District invites community members to participate in an Online Public Open House.

This virtual event offers a convenient opportunity to learn about the 2025 Long-Range Facilities Plan (LRFP) and provide input that will help shape the district's long-term facilities strategy.

If you are unable to attend, you can still contribute. Email your questions or feedback to the Richmond Project Team at planning@sd38.bc.ca.

Scan QR code to register:



  | sd38.bc.ca/lrfp

RICHMOND
SCHOOL DISTRICT NO. 38

Personal Digital Devices

Personal digital devices should not be used unless permission has been granted. Students are expected to adhere to the Acceptable Use Guidelines and District Code of Conduct.

Read the full policy here: sd38.bc.ca/devices



