



**James Gilmore
Elementary**
8380 Elsmore Road
Richmond, BC
V7C 2A1

Trevor Shuto
Principal

School Schedule:
8:40 - Warning Bell
8:45 - Classes Begin
10:10 - 10:25 - Recess
11:50 - 12:42 - Lunch
2:45 - Dismissal

School - 604-668-6268
Early Warning 604-668-6637

Monday	No School - Pro D Day
Tuesday	
Wednesday	1:00 - Band Concert 5:30 - Outdoor Ed Meeting - Mrs. Hill's Classroom
Thursday	Kindergarten Hearing Screening
Friday	

Important Dates!	
Feb 5th	Hot Lunch - Poke Rice Bowls
Feb 10th	Hot Lunch Frozen Yogurt
Feb 12th	PAC Meeting Zoom
Feb 14th	No School - Pro D Day
Feb 17th	No School - Family Day

Dear Gilmore Families,

Newsletters in this format will be one of the main sources of communication that you can expect to receive from the Gilmore office once again this year. Welcome to Gilmore!

- PAC Pedal Heads Fundraiser:** For \$25 off ALL PedalHeads Camps and Programs please use promo code: RICHGIL25. Each time the code is used, Gilmore PAC will get \$25. Code expires June 30th but can be used for programs/camps in July and August (you just need to register before June 30th). Please see the flyer below for more information. Email gilmorepacsd38@gmail.com with any questions.
- Drop Off and Pick Up Safety:** Please ensure that you are driving safely in the neighbourhood during drop off and pick up times. We have noticed recently an increase in unsafe driving and choices made by drivers during these times. Please do not pick up and drop off in the staff parking lot during drop off and pick up times. Thank you for helping up ensure that everyone is safe in and around our school community.
- A reminder that on February 26th and 27th there is early dismissal at 1:45** for Parent Teacher Conferences. More information of come from your child's classroom teacher. Just wanted to remind you of the dates so that you can plan ahead.
- Affordability Fund Reminder** - The Student and Family Affordability Fund is still in place if you require financial assistance with school-related costs such as school and course fees, workbooks, specialty supplies, field trips and other school-related charges and costs. Please reach out to Mr. Shuto if you could benefit from this fund.
- Feeding Futures** - The provincial government announced a new Feeding Futures School Program Fund, designed to help with nutritional supports for students. We are working closely with a District Staff Member and we want to ensure families are aware to reach out to Mr. Shuto if you require support. Requests will be treated with dignity and your privacy will be respected.

As always, we thank you for your support and look forward to teaching, learning with, and supporting our Gilmore students this year!

Sincerely, Trevor Shuto and the Gilmore Staff

Gilmore's School Story

We continue to work with our school language at Gilmore to continue to build expectations of behaviour and a culture of care. The students are gaining a better understanding of what this means and how they can demonstrate this at school. CARE FOR SELF, CARE FOR OTHERS, CARE FOR PLACE. You can help by discussing the language with your children at home as well.

Thank you for your support, it is much appreciated!



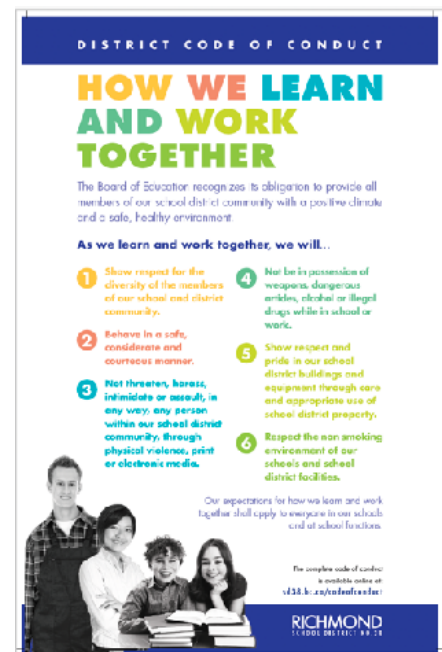
Window Into Learning

What are you learning about? Why is it important?

“We are learning about the salmon life cycle and how to help the alevin survive, by keeping the tank dark and only visiting them three times per day. This interests me because they will look different when they grow older. It is important that we are getting the salmon sent to our class because less and less salmon are surviving in the wild.”

School District / Gilmore Code of Conduct

This Code of Conduct is used at Gilmore and around the District to help remind all of us of the expectations in all School District Buildings as well as when participating in all School District events.





Gilmore's Return-It Account

Gilmore has a "Return It" account at the Blundell Return It Location to help raise money to subsidize our Grade 6 trip to camp this year. The Phone number associated with the account is 604-668-6268. Please use clear bags with no pull strings when returning containers. Please don't crush / flatten containers. Please only put a max of 12 glass bottles in each bag. Please remove garbage from bags before returning. Thank you for your support!

SD38 and Multi-faith Society Reconciliation, Diversity, Equity and Inclusion Calendars

An inclusive calendar is a living document that shares dates of significance, recognition, and celebration. Dates for each month will be highlighted here.

January 2025						
S	M	T	W	T	F	S
			1	2	3	4
5	6	7	8	9	10	11
12	13	14	15	16	17	18
19	20	21	22	23	24	25
26	27	28	29	30	31	

Tamil Heritage Month

- 1 Ochetookeskaw – Kissing Day – Hand Shaking Day (Métis)
- 4 World Braille Day
- 5 Guru Gobindh Singh Birthday/Prakash ☸
- 13 Maghi ☸
- 14 Mahayana New Year ☸
- 15 Black Excellence Day
- 17 Raoul Wallenberg Day
- 21 Lincoln Alexander Day
- 24 World Day for African and Afrodescendant Culture
- 27 International Holocaust Remembrance Day
- 28 **Semester 2 Starts (Select Secondary Schools)**
- 29 Lunar New Year ☸
- 29 National Day of Remembrance of the Quebec City Mosque Attack and Action Against Islamophobia
- 29 Day of Remembrance and Action on Islamophobia (in the Province of BC)

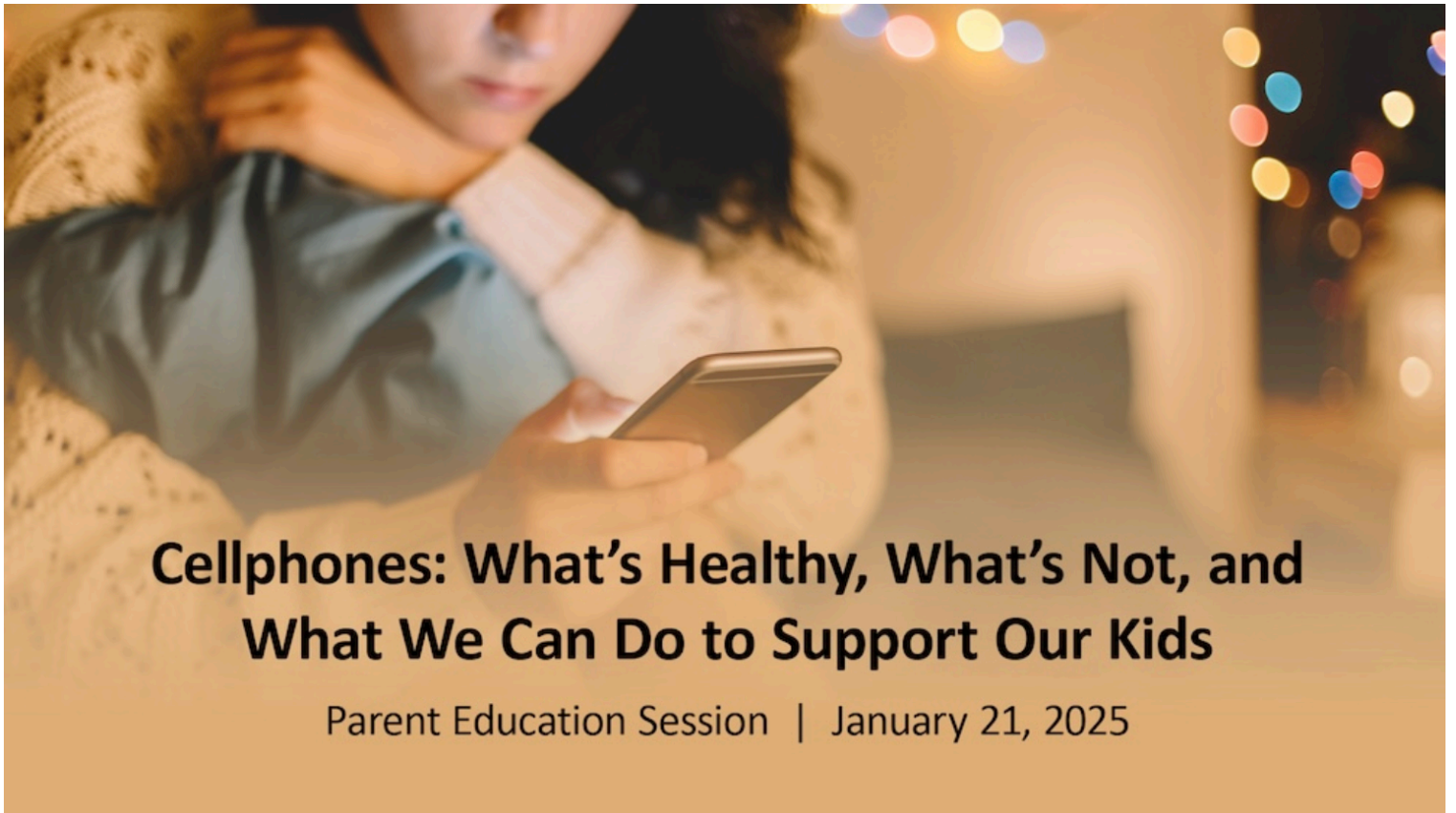
JANUARY 2025

SUNDAY	MONDAY	TUESDAY	WEDNESDAY	THURSDAY	FRIDAY	SATURDAY
			☸ Spirit Moon 1 ☸ Solar New Year ☸ Gantan-sai △ New Year's Day ☐ St. Basil's Day	☸ Last Day of Hanukkah 2 ☐ Berchtold Day (Switzerland)	3	✈ Ghambar Maidayarem ends 4 ☐ World Braille Day (Int)
☸ Birth date of Guru Gobind Singh Ji (1666 - 1708) 5	✠ Epiphany (W) 6 ✠ Armenian Christmas ✠ Theophany (E - New Calendar)	✠ Christmas (Old / Julian Calendar) 7	8	9	☸ Linji Memorial 10	11
		☸ Mahāyāna New Year 12 ☸ Seijin-no-hi ☸ Maghi ☐ St. Knut's Day (Finland, Sweden) ☐ Lohri (India) ○ Full Moon	☸ Makar Sankranti 13 ✠ New Year (Old / Julian Calendar) ☐ Pongal (S India)	14	☐ National Religious Freedom Day (USA) 15	☸ Baizhang Memorial 16 ✠ Week of Prayer for Christian Unity begins 17 ☸ Hakuin Ekaku Memorial ☸ Sūtan
☸ Eihei Dogen Kigen Birth date 19 ☸ World Religion Day ✠ Theophany (E - Old Calendar)	△ Martin Luther King Day (USA) 20	☐ Quebec Flag Day 21	☐ Kitchen God Day (Vietnam, China) 22	23	24	☸ Honen Shonin Memorial 25 ☐ Burns Night
☸ Laylat al-Miraj (Night Journey to Heaven) (beginning at sunset to sunset of the next day) 26 ☐ Australia Day ☐ Republic Day (India)	☸ Holocaust Remembrance Day (UN) 27	28	☸ Lunar New Year (4723) - Year of the Snake 29 ☐ National Day of Remembrance and Action Against Islamophobia (Canada) ● New Moon	☐ Sadeh (Iran) 30 ☐ Education Day (The Three Holy Hierarchs) (Greece)	31	

Please see information about other events and opportunities below!

If you are interested in the Parent Education Session below, please register at this link to receive the webinar link for the session. Thank you.

<https://sd38.bc.ca/news/2024-10-16/cellphones-whats-healthy-whats-not-and-what-we-can-do-support-our-kids>





- For \$25 off ALL PedalHeads Camps and Programs please use promo code: RICHGIL25
- The promo code expires June 30th, but can be used for July and August programming (you just need to register and apply the code before June 30th)
- Each time the code is used Gilmore PAC will get \$25!
- There are no limits on how many times each family can use the code.
- Please share with your family and friends.
- See flyers below and visit: PedalHeads.com

SPRING + SUMMER
BIKE, SOCCER, SWIM & TRAIL

PAC FUNDRAISER
PROCEEDS WILL GOVERNOR USE TO YOUR SCHOOL PAC WITH PROMOTED CODE USE.

FOR FAMILIES OF GILMORE ELEMENTARY

Use code **RICHGIL25** for \$25 off

pedalheads.com/british-columbia

VALID FOR ANY PEDALHEADS PROGRAM
IN BRITISH COLUMBIA UNTIL APRIL 30, 2024

SPRING + SUMMER
REGISTRATION
Camps & lessons for kids aged 2-12

JAN 21 **SPRING BREAK**
Bike, Swim, Soccer, Trail

FEB 11 **SPRING**
Swim and Soccer

APR 8 **SUMMER**
Bike, Swim, Soccer, Trail

PEDALHEADS

Abbotsford • Burnaby • Coquitlam • Delta • Kelowna • Langley •
Nanaimo • North Vancouver • Port Coquitlam • Richmond •
Surrey • Tsawwassen • Vancouver • Victoria • West Vancouver



ADAPTIVE, INCLUSIVE PROGRAM



FOR ALL ABILITIES AND ALL POSSIBILITIES!

STARTS **JAN 25TH 2025**

SATURDAY | 3:30-5:00PM

TOMSETT ELEMENTARY SCHOOL

9671 ODLIN RD, RICHMOND

Contact: president@richmondlacrosse.com or scott@lacrossingbarriers.org

If you are interested in volunteering please contact president@richmondlacrosse.com

Personal Digital Devices

Personal digital devices should not be used unless permission has been granted. Students are expected to adhere to the Acceptable Use Guidelines and District Code of Conduct.

Read the full policy here: sd38.bc.ca/devices

